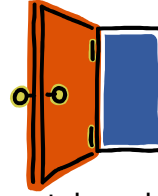




Disability Rights in Shelter

You have a disability if you have a mental or physical condition that makes it hard for you to do day-to-day things.

Disability Discrimination is illegal.



A shelter cannot refuse to let you in because you have a mental or physical disability.

A shelter cannot force you to stay apart from the rest of the shelter residents. Segregation is illegal.

A shelter cannot ask you questions about your disability unless the shelter provides services only to people with specific health conditions or if you have requested help and they need more information.

The Shelter Must Provide “Reasonable Accommodations”

You have the right to request a change in a rule, policy, or the building if your disability is affecting your ability to stay at the shelter. Examples:

- You can request an exception to the “no pets policy” if you have a service animal.
- You can ask to stay on the bottom bunk of the bed if you have problems with your knees.
- You can ask for the caseworker to hold meetings in your room if you are having a hard time getting out of bed because of your disability.



Get Help!

- ✓ Call the Washington Legal Clinic for the Homeless at (202) 328-5500,
- ✓ Ask for a “Fair Hearing” at the Office of Administrative Hearings at (202) 727-8280, OR
- ✓ File a complaint with the Office of Human Rights at (202) 727-4557.

